

Contents

- 01 ● Fiberglass Scaffolding
- 04 ● Ladders
- 10 ● Safety Tools
- 39 ● Protection Tools for Live Work
- 56 ● Electric Construction Tools
- 67 ● Communication Construction Tools
- 73 ● Instrumentation
- 76 ● Hardware Fitting



1

Fiberglass Scaffolding Tower Series

Single Width, Double Width

The insulation quick assembly maintenance scaffolding is developed according to the field demand by using the latest production technology at home and abroad. The material is made of lightweight and high-strength glass fiber tube, with corrosion resistance, anti-aging, easy to use, high safety, strong insulation performance, etc., which is an ideal iterative product for ordinary scaffolding.

Single Width Tower

Suitable for working in limited space.

Compact design easily pass through normal doors or pedestrian access.

Light, solid & compact size, easy assemble & dismantle, easy loading by small trucks.

Double Width Tower

Suitable for construction and industrial usages.

Inclined ladder structure provides maximum stability for the scaffold tower.

Proper combination of design with greater flexibility to improve utilization efficiency.



Single Width

Length	Width	Total Height	Height of the Working Platform	Weight (kg)
2m	0.85m	5m	4m	150
2m	0.85m	6m	5m	174
2m	0.85m	7m	6m	193
2m	0.85m	8m	7m	217
2m	0.85m	9m	8m	239
2m	0.85m	10m	9m	259



Double Width

Length	Width	Total Height	Height of the Working Platform	Weight (kg)
2m	1.35m	5m	4m	169
2m	1.35m	6m	5m	200
2m	1.35m	7m	6m	214
2m	1.35m	8m	7m	249
2m	1.35m	9m	8m	267
2m	1.35m	10m	9m	296
2m	1.35m	11m	10m	314
2m	1.35m	12m	11m	340
2m	1.35m	13m	12m	358
2m	1.35m	14m	13m	407
2m	1.35m	15m	14m	430

Insulated Folding Scaffold Platform

The insulation folding platform scaffold is a kind of scaffold made of glass fiber material which is easy to install quickly.

The scaffold has a large working area, and the assembled saddle is safe and stable. It can be equipped with oblique support and easily built without any tools.

Because the insulation folding platform scaffold has good combination performance, flexible mobility, good insulation performance, oxidation resistance, corrosion resistance etc. , it is an excellent choice for electricians.



2

FRP Ladder



FRP Extension Ladder

Features and Benefits

- ◇ High strength U shap FRP side rails
- ◇ Size of Side Rails: 30 x 85mm
- ◇ Thickness: 3mm
- ◇ Slip-resistant aluminum D rungs
- ◇ Gravity spring rung locks
- ◇ Self-aligning shoe with slip resistant tread
- ◇ Color: Red, Yellow, Orange



Optional Accessories

Cable Hooks and Rubber Belt



Aluminum V Rung



Model	Extended Length	Closed Length	Width	Steps	Step Distance	Weight
RZEL-16	4.08m	2.6m	390-420mm	2*8	30cm	13.10kg
RZEL-20	5.28m	3.2m	390-420mm	2*10	30cm	16.15kg
RZEL-24	6.48m	3.8m	390-420mm	2*12	30cm	19.10kg
RZEL-28	7.68m	4.38m	390-420mm	2*14	30cm	21.70kg
RZEL-32	8.86m	4.98m	390-420mm	2*16	30cm	24.50kg
RZEL-36	9.80m	5.6m	390-420mm	2*18	30cm	27.90kg
RZEL-40	10.7m	6.2m	390-420mm	2*20	30cm	30.30kg

FRP Single Straight Ladder

Features and Benefits

- ◇ The side rails and rungs are both glass fiber reinforced plastic;
- ◇ High Strength, non-conductivity;
- ◇ Corrosion resistance, good flame retardancy;
- ◇ Light weight, easy to carry.

Model	Length	Steps	Step Distance	Max Load
RZGZT-1.5M	1.5m	4	30cm	150kgs
RZGZT-2M	2m	6	30cm	150kgs
RZGZT-3M	3m	9	30cm	150kgs
RZGZT-4M	4m	13	30cm	150kgs
RZGZT-5M	5m	16	30cm	150kgs



FRP Step Stool

Features and Benefits

- ◇ Made of FRP material, high strength, corrosion resistance, good insulation ;
- ◇ Striped rubber pads are used on the surface for insulation and anti-skid ;
- ◇ Reasonable design, safe and stable With handles and wheels, easy to move, convenient and practical.

Model	Layers	Height of Each Layer	Total Height	Table Size
RZGDD-01	1	40cm	40cm	30cm x 50cm
RZGDD-02	2	40cm	80cm	30cm x 50cm
RZGDD-03	3	40cm	120cm	30cm x 50cm
RZGDD-04	4	40cm	160cm	30cm x 50cm



FRP Telescopic Ladder

Features and Benefits

- ◇ Our patented product;
- ◇ Multilayer winding process;
- ◇ High strength, high insulation;
- ◇ Super light, small volume, easy to carry;
- ◇ Anti-smashing design to protect the hand from harm when the ladder is closed.
- ◇ Widely used in power engineering, communication engineering, electrical engineering, water-power engineering, and so on.



Model	Extended	Retracted	Steps	Step Distance	Weight	Max Load
RZFY-2.2M	2.2M	80CM	6	40CM	6.70KG	150KG
RZFY-2.6M	2.6M	85CM	7	40CM	7.90KG	150KG
RZFY-3.0M	3.0M	90CM	8	40CM	9.10KG	150KG
RZFY-3.2M	3.2M	90CM	8	43CM	9.70KG	150KG
RZFY-3.4M	3.4M	95CM	9	40CM	10.50KG	150KG
RZFY-3.6M	3.6M	95CM	9	43CM	11.10KG	150KG
RZFY-3.8M	3.8M	105CM	10	40CM	11.70KG	150KG
RZFY-4.0M	4.0M	105CM	10	42.5CM	12.30KG	150KG
RZFY-5.0M	5.0M	110CM	12	44CM	15.30KG	150KG

Multilayer Winding Process
High Strength



FRP A Type Double Step Ladder

Model	Unfolded Height	Unfolded Width	Base Width	Steps	Step Distance	Weight	Max Load
RZD-203	1160mm	880mm	480mm	3+3+1	30cm	7.55kg	150kg
RZD-204	1450mm	1000mm	520mm	4+4+1	30cm	8.65kg	150kg
RZD-205	1750mm	1150mm	560mm	5+5+1	30cm	10.90kg	150kg
RZD-206	2020mm	1400mm	600mm	6+6+1	30cm	12.45kg	150kg
RZD-207	2310mm	1550mm	640mm	7+7+1	30cm	14.40kg	150kg
RZD-208	2610mm	1650mm	680mm	8+8+1	30cm	16.10kg	150kg
RZD-209	2910mm	1800mm	720mm	9+9+1	30cm	17.80kg	150kg



FRP Single Straight Ladder with Aluminum Rungs CE Certificate

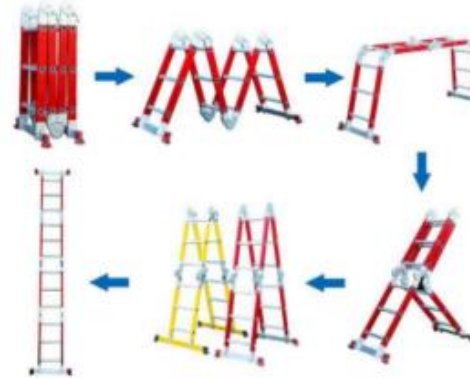
Features and Benefits

- ◇ High strength U shape FRP side rails
- ◇ Size of Side Rails: 30 x 85mm
- ◇ Thickness: 3mm
- ◇ Slip-resistant Aluminum D rungs
- ◇ Self-aligning shoe with slip resistant tread
- ◇ Optional Accessories: Aluminum V Rung with Rubber Pads, Hooks
- ◇ Color: Red, Yellow, Orange

Model	Height	Steps	Step Distance	Weight	Max Load
RZS-06	2m	6	30cm	5.5kg	150kg
RZS-08	2.5m	8	30cm	6.9kg	150kg
RZS-09	3m	9	30cm	8.3kg	150kg
RZS-11	3.5m	11	30cm	9.7kg	150kg
RZS-13	4m	13	30cm	11.1kg	150kg
RZS-14	4.5m	14	30cm	12.5kg	150kg
RZS-16	5m	16	30cm	13.8kg	150kg
RZS-18	5.5m	18	30cm	15.2kg	150kg
RZS-19	6m	19	30cm	16.6kg	150kg

FRP A Type Single Step Ladder

Model	Unfolded Height	Unfolded Width	Base Width	Steps	Step Distance	Weight	Max Load
RZF-03	1150mm	850mm	480mm	3+1	30cm	5.85kg	150kg
RZF-04	1400mm	1000mm	520mm	4+1	30cm	6.90kg	150kg
RZF-05	1710mm	1200mm	560mm	5+1	30cm	8.45kg	150kg
RZF-06	2010mm	1400mm	600mm	6+1	30cm	9.60kg	150kg
RZF-07	2300mm	1470mm	640mm	7+1	30cm	11.10kg	150kg
RZF-08	2600mm	1650mm	680mm	8+1	30cm	12.35kg	150kg
RZF-09	2900mm	1700mm	720mm	9+1	30cm	13.85kg	150kg



Multifunctional FRP Step Ladder

Features and Benefits

- ◇ Reasonable & humanized design
- ◇ The shape of the ladder can be changed according to the needs of use
- ◇ High strength, corrosion resistant
- ◇ Small size after closing, easy to carry and store

Model	Unfolded Height	Unfolded Width	Base Width	Steps	Step Distance	Weight	Max Load
RZMT-01	67.5cm	1.1m	2.27m	4*2	28cm	13.15kg	150kg
RZMT-02	95.5cm	1.7m	3.47m	4*3	28cm	14.35kg	150kg
RZMT-03	123.5cm	2.3m	4.67m	4*4	28cm	15.55kg	150kg
RZMT-04	153cm	2.8m	5.72m	4*5	28cm	19.55kg	150kg

FRP Step Ladder with Handrails

Features and Benefits

- ◇ High strength FRP side rails
- ◇ Widened aluminum step and working platform with toe board
- ◇ Assemble safety handrails and protection nets
- ◇ With rubber casters, easy to move, flexible and wear-resistant
- ◇ Can be foldable to save storage space

Model	Unfolded Height	Unfolded Width	Base Width	Steps	Step Distance	Weight	Max Load
RZFH-03	1730mm	930mm	850mm	2+1	30cm	13.20kg	150kg
RZFH-04	2100mm	1100mm	1150mm	3+1	30cm	12.75kg	150kg
RZFH-05	2380mm	1300mm	1430mm	4+1	30cm	14.50kg	150kg
RZFH-06	2700mm	1480mm	1700mm	5+1	30cm	16.00kg	150kg
RZFH-07	2980mm	1700mm	2000mm	6+1	30cm	16.40kg	150kg
RZFH-08	3300mm	1880mm	2300mm	7+1	30cm	19.00kg	150kg
RZFH-09	3580mm	2000mm	2600mm	8+1	30cm	21.00kg	150kg
RZFH-10	3950mm	2200mm	2900mm	9+1	30cm	22.00kg	150kg
RZFH-11	4200mm	2400mm	3200mm	10+1	30cm	24.10kg	150kg
RZFH-12	4520mm	2600mm	3500mm	11+1	30cm	26.30kg	150kg



3 Safety Tools



HOT STICKS

The hot stick is designed for opening and closing disconnect switches. It is made from fiberglass, with super light, high strength and high dielectric properties.

Several models and lengths available, can be customized according to requirements.

1. Telescopic Triangular Hot Sticks

The triangular hot stick is one of the most used tools in hot line maintenance. It comprises a number of sticks that slide into each other with integrated locking buttons. It has a lot of advantages over round hot stick.

- ◇ High strength, more stable than round hot sticks.
- ◇ Resolves the rotating problems found in round hot sticks.
- ◇ Fluorescent green tip section is highly visible and has a foam core.
- ◇ Only the number of sections required for the job are extended, giving great flexibility.
- ◇ Scale printing is optional, available in English or Metric graduations.



Model	Sections	Extended	Retracted	Weight
RZSLG-01	2	3m	1.70m	1.38kg
RZSLG-02	3	3.8m	1.48m	1.66kg
RZSLG-03	4	5m	1.53m	2.26kg
RZSLG-04	5	6.4m	1.58m	2.92kg
RZSLG-05	6	7.8m	1.63m	3.68kg
RZSLG-06	7	9.2m	1.68m	4.55kg
RZSLG-07	8	10.6m	1.75m	5.60kg
RZSLG-08	9	12m	1.75m	6.50kg
RZSLG-09	9	12.5m	1.78m	6.80kg
RZSLG-10	9	15m	2.05m	8.20kg





Sectional Hot Sticks

Features and benefits

- ◇ Multi-section combination structure, in actual work, the length can be extended as needed.
- ◇ The rain cover can be added as required.
- ◇ The diameter of each section is the same, most regular diameter is 32mm. The optional diameter is 36mm and 38mm.

Model	Sections	Length	Diameter
RZYLK-01	3	3m	32mm
RZYLK-02	3	4m	32mm
RZYLK-03	3	4.5m	32mm
RZYLK-04	3	5m	32mm
RZYLK-05	4	6m	32mm
RZYLK-06	5	7.5m	32mm

Different heads for your selection.



Model	Sections	Length	Diameter
RZTLG-01	3	3m	32mm
RZTLG-02	3	4m	32mm
RZTLG-03	3	4.5m	32mm
RZTLG-04	3	5m	32mm
RZTLG-05	4	6m	32mm
RZTLG-06	5	7.5m	32mm

Model	Sections	Length	Diameter
RZJYK-01	3	3m	32mm
RZJYK-02	3	4m	32mm
RZJYK-03	3	4.5m	32mm
RZJYK-04	3	5m	32mm
RZJYK-05	4	6m	32mm
RZJYK-06	5	7.5m	32mm



Telescopic Hot Sticks (Button Type)

Features and benefits

- ◇ Long reach, convenience and safety.
- ◇ It is telescopic, small volume, easy to transport and carry.
- ◇ A variety of lengths available.

Model	Sections	Extended	Retracted	Weight
RZPLG-01	3	3m	1.20m	0.97kg
RZPLG-02	3	4m	1.60m	1.30kg
RZPLG-03	4	4m	1.30m	1.50kg
RZPLG-04	4	5m	1.50m	1.65kg
RZPLG-05	4	6m	1.80m	2.00kg
RZPLG-06	5	5m	1.30m	2.00kg
RZPLG-07	5	6m	1.50m	2.40kg
RZPLG-08	5	7m	1.70m	2.80kg
RZPLG-09	5	8m	1.90m	3.20kg
RZPLG-10	6	9m	1.80m	3.60kg
RZPLG-11	6	10m	1.95m	4.00kg
RZPLG-12	7	10.5m	2.05m	4.20kg

Telescopic Hot Sticks (Rotary Buckle Inside)

Features and benefits

- ◇ It can be telescopically positioned to any length according to the space used.
- ◇ Long reach, convenience and safety.
- ◇ It is telescoping, small volume, easy to transport and carry.
- ◇ A variety of lengths available.

Model	Sections	Extended	Retracted	Weight
RZNLG-01	3	3m	1.35m	1.45kg
RZNLG-02	3	4m	1.59m	1.80kg
RZNLG-03	3	4.5m	1.70m	2.00kg
RZNLG-04	3	5m	1.80m	2.25kg
RZNLG-05	4	6m	1.85m	2.80kg
RZNLG-06	5	7.5m	1.90m	3.75kg
RZNLG-07	5	9m	2.20m	4.20kg
RZNLG-08	5	10m	2.50m	4.65kg



Body Rescue Hook Stick

Features and benefits

- ◇ 18inch open hook mounted on fiberglass pole.
- ◇ Can be used to withdraw an injured worker out of a hazardous area.
- ◇ Convenient to confined spaces near electrical cabinets and switch gear.
- ◇ Featuring a foam filled, fiberglass reinforced handle for superior electrical insulation.
- ◇ Wall supporter for hook is optional.
- ◇ EN 50508:2009 Standard.

Model	Length	Length of Hook	Opening of Hook
RZJSG-01	1.5m	49cm	46cm
RZJSG-02	1.8m	49cm	46cm
RZJSG-03	2m	49cm	46cm
RZJSG-04	2.5m	49cm	46cm



Telescopic Measuring Height Stick

Safely measure vertical heights. It is widely used to measure overhead lines, telephone lines, cable-TV, railways, highway clearances, and structures.

Features and benefits

- ◇ Eye-level reading, no calculations required, the read-height is shown at the top of the base section.
- ◇ Positive locking buttons, spring-loaded, fast accurate and easy to extend.
- ◇ Available in English or Metric graduations.

Model	Extended	Retracted	Weight
RZCG-01	6M	1.32M	1.3KG
RZCG-02	8M	1.49M	1.7KG
RZCG-03	10M	1.45M	2.1KG
RZCG-04	12M	1.55M	2.6KG
RZCG-05	15M	1.62M	3.3KG
RZCG-06	18M	1.68M	4.0KG

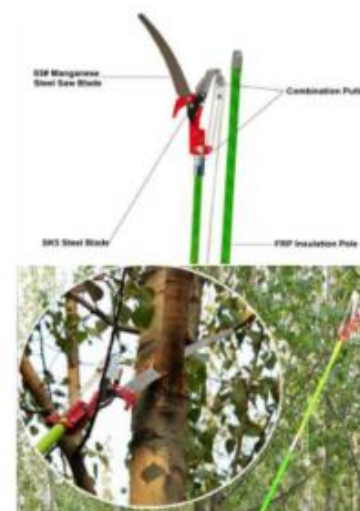


Tree Pruner

The product is suitable for pruning tree branches and trunks under power lines, the rod is made from fiberglass, with the property of high insulation.

The fiberglass tree pruner is reasonable in design, unique in structure, convenient to carry, safe, reliable, labor-saving and efficient. It is an ideal tool for tree pruning in power sector, railway, garden, orchard and forest farm.

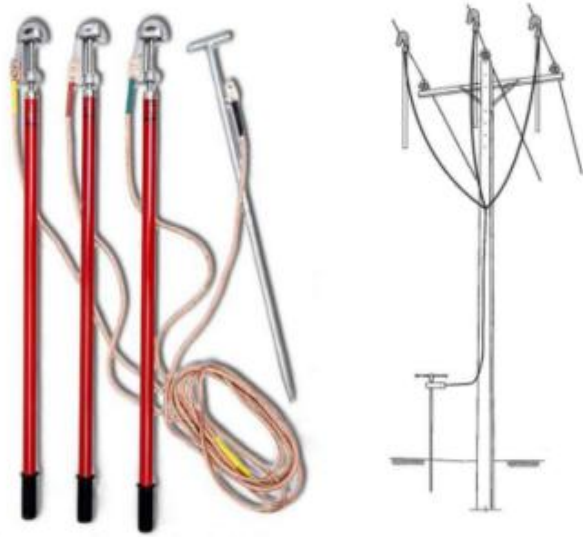
Model	Sections	Length	Diameter
RZGZJ-01	3	3m	32mm
RZGZJ-02	3	4m	32mm
RZGZJ-03	3	4.5m	32mm
RZGZJ-04	3	5m	32mm
RZGZJ-05	4	6m	32mm
RZGZJ-06	5	7.5m	32mm



PORTABLE EARTHING EQUIPMENT

The temporary grounding equipment are designed for using to protect workers from high voltage electric shock. Suitable for making power failed equipments or temporary short-circuited lines grounded, preventing unexpected power to intrude in and do damage to personnel and equipments.

Below are our regular specification, customization is acceptable.



Diagram

Single Phase Type

Model	Voltage	Cable Size	Cable Length	Stick Length	Number of Stick
RZJDD-01	0.4kv	16mm ²	5m x 3pcs	0.5m	3pcs/set
RZJDD-02	10kv	25mm ²	10m x 3pcs	1.0m	3pcs/set
RZJDD-03	35kv	35mm ²	12m x 3pcs	1.5m	3pcs/set
RZJDD-04	110kv	35mm ²	15m x 3pcs	2.0m	3pcs/set
RZJDD-05	220kv	50mm ²	18m x 3pcs	3.0m	3pcs/set
RZJDD-06	330K V	70mm ²	18m x 3pcs	5.0m	3pcs/set
RZJDD-07	500K V	95mm ²	18m x 3pcs	6.0m	3pcs/set



Diagram

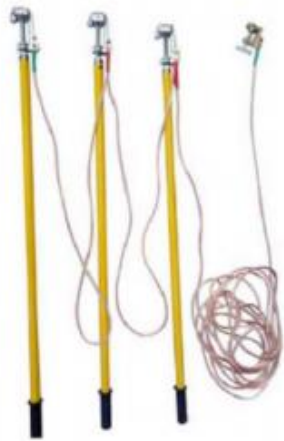
Combination Type

Model	Voltage	Cable Size	Cable Length	Stick Length	Number of Stick
RZJDS-01	0.4kv	16mm ²	3x1.5m+8m	0.5m	3pcs/set
RZJDS-02	10kv	25mm ²	3x1.5m+10m	1.0m	3pcs/set
RZJDS-03	35kv	35mm ²	3x1.5m+10m	1.5m	3pcs/set
RZJDS-04	110kv	35mm ²	3x2m+12m	2.0m	3pcs/set
RZJDS-05	220kv	50mm ²	3x2m+15m	3.0m	3pcs/set

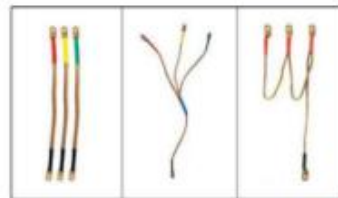


Tandem Type

Model	Voltage	Cable Size	Cable Length	Stick Length	Number of Stick
RZJDB-01	0.4kv	16mm ²	2x1.5m+8m	0.5m	3pcs/set
RZJDB-02	10kv	25mm ²	2x1.5m+10m	1.0m	3pcs/set
RZJDB-03	35kv	35mm ²	2x2m+10m	1.5m	3pcs/set
RZJDB-04	110kv	35mm ²	2x2m+12m	2.0m	3pcs/set
RZJDB-05	220kv	50mm ²	2x3m+15m	3.0m	3pcs/set



Diagram



Grounding Cable

The grounding cable is made up of multi-stranded copper wire and with transparent PVC jacket. The cable is highly flexible and easy to operate during work.

Several kinds of sizes for your selection: 16mm², 25mm², 35mm², 50mm², 70mm², 95mm² and 120mm².

A wide variety of clamps for your selection





Personal Security Grounding Wire

Personal security grounding wire is a grounding device installed to prevent induced voltage generated by adjacent live equipment and lines to ensure the personal safety of operators.

If there are adjacent, parallel, cross-over and tower erection lines in the work area, in order to prevent the induced voltage on the power failure maintenance line from hurting people, personal security grounding wire should be used. When working in contact with or close to the conductor.

Voltage: 0.4KV



Grounding Cable For Ring Main Unit

Voltage	Cable Size	Cable Length	Configuration	Application
10KV	25mm ²	3x1m+2m	Elbow Type Head Earth Clamp	Ring Main Unit



High Voltage Discharge Rod

High voltage discharge rod is made of new insulation material. It has the characteristics of both elongation and contraction. Portable telescopic high pressure discharge rod is easy to be used in various outdoor high voltage tests, especially after the DC withstand voltage test, the charge accumulated on the test product is discharged to the ground to ensure personal safety. It is easy to carry, convenient and flexible, with small size, light weight and safety.

Voltage Grade	Total Length	Single Section Length	Sections	Retracted Length	Resistor Resistance
10KV	1m	0.5m	2	0.65m	6.6m
35KV	1.5m	0.5m	3	0.65m	8.8m
110KV	2m	0.66m	3	0.81m	16m
220KV	3m	1m	3	1.15m	16m

Cable Branch Box Grounding Cable

The grounding line of cable branch box can generally have 6-8 branch incoming and outgoing lines in the application, which can realize the multi-channel power transmission in the cell and provide technical guarantee for the in-depth load center, shortening the power supply radius and reducing the line loss.

Product Structure

- 1, Insulated operation rod three straight (0.5m, diameter 30m)
- 2, Five kinds of copper head (12, 13, 14, 16, 116)
- 3, Three homogenous grounding pins
- 4, One set of grounding sets
- 5, One copper grounding clip(double hole)



Shotgun Stick

The shotgun stick is suitable for the operation of high voltage electrical equipment, such as combined transformer(American Type), cable branch box and ring network cabinet.

It can switch the load switches under the condition of being live, and plug and pull the accessories such as plug-in fuse, elbow-type lightning arrester and elbow-type cable connector. It is an indispensable tool for combined transformer, cable branch box and ring network cabinet.

It also can be used to operate the line clamps.

Features and benefits

- ◇ Easy operation, flexibly structured.
- ◇ Good insulation properties, high mechanical strength.
- ◇ The operating mechanism incorporates a sliding hand grip that opens the hook to grasp a clamp eye screw.



Model	Length	Voltage	Weight
RZXB-01	1.4m	10kv	2.0kg
RZXB-02	2m	35kv	2.4kg
RZXB-03	2.5m	110kv	2.9kg

Truck Load Measuring Stick

This telescoping fiberglass measuring height stick is designed for measuring truck loads.

It have many advantages for Truckers,

- ◇ Large, accurate easy-to-read numbers in M/FT.
- ◇ Has both imperial and metric measurements.
- ◇ The 4' hinged horizontal rod helps you adjust your sightline, allowing you to make more accurate measurement.
- ◇ No need to guess at the exact height of the load, this basic stick provides extremely accurate measurement.
- ◇ Full 4' horizontal arm for easy measurement of extra-wide loads.



Model	Extended	Horizontal Rod	Sections	Weight
RZKCC-01	4.50m (15FT)	1.2m (4FT)	4	1.7kg
RZKCC-02	5.50m (18FT)	1.2m (4FT)	4	2.1kg
RZKCC-03	6.09m (20FT)	1.2m (4FT)	5	2.3kg

Latex Insulating Gloves for Live Working

It is suitable for wearing when live working on electrical equipment to prevent direct hand contact with the charged body to avoid electric shock.

IEC60903-2014 Insulating Gloves For Live Working

Class	Max. Use Voltage AC/DC (V)	Test Voltage AC/DC (kV)	Min. Tolerated Voltage (kV)	Max. Leakage Current (mA)
00	500/750	2.5/4	5	≤12
0	1000/1500	5/10	10	≤12
1	7500/11250	10/20	20	≤16
2	17000/25500	20/30	30	≤18
3	26500/39750	30/40	40	≤20
4	36000/54000	40/60	50	≤24



Rubber Insulated Gloves for Live Working

The product make the import high-quality rubber as the main substrate, and all use vulcanized molding equipment, and is made by the most advanced glue injection technology, the gloves' appearance is all hand shape.

The product has good insulation performance, light, thin, soft, comfortable, safe and reliable.

And is tested in immersion and electricity one by one before they leave the factory.



Conform to standard: IEC60903-2002

Class	Max. Use Voltage AC/DC (kV)	Test Voltage AC/DC (kV)/3min	Min. Tolerated Voltage (kV)	Max. Leakage Current (mA)
1	7.5/11.25	10/20	20	≤16
2	17/25.5	20/30	30	≤18
3	26.5/39.75	30/40	40	≤20
4	36/54	40/60	50	≤24

Cooling Vest



Reflective Vest



Leather Protective Gloves

The gloves are made of sheepskin, which not only can protect the rubber insulated gloves, but also is economical and practical.

Rubber insulated gloves should always be worn with leather protective gloves to provide necessary mechanical protection against cuts, scrapes and punctures.



Rubber Insulated Boots for Live Working

It is suitable for electric and electrical equipment at 400V-35000V, in AC 35000V and below to prevent direct contact with the charged body from electric shock and protection against the foot. This product is made of natural rubber, good insulation, soft and light, comfortable wearing, safe and reliable, each product is strictly tested before leaving the factory.

Executive standard: DL/T676-2012

Model	Adaptable Voltage (kV)	Verification Voltage (kV)/3min	Allowable Leakage Current (mA)
RZXZ-1	3	10	≤20
RZXZ-2	10	20	≤22
RZXZ-3	20	30	≤24
RZXZ-4	35	40	≤26



V-type Safety Helmet

This product has good stamping resistance performance and high and low temperature resistance performance, a wide temperature resistance range, the use of temperature range from -10℃ to 50℃, plays a safety protection role on the head, good side pressure resistance performance, suitable for metallurgical high temperature operation, oilfield drilling, forest logging, power supply lines, construction and alpine areas. When necessary, a near-electric alarm can be added to make it have a near-electric alarm function.



Insulating Gloves Inflator

Electrical insulating gloves must be inspected before each use. Inspection is simplified by using a simple, easy to use and portable glove inflator and provides a quality means of inspecting gloves in the field.

The glove is secured to the inflator using a nylon strap and fastened with hook and pile, or a rubber "O" ring. Inflation is accomplished by pumping the bellows of the inflator. Weight: 0.91KG



充气检测

Insulation Suit for Live Working

Suitable to protect operators from electrical shock on electrical equipment of a voltage grade of AC 10000v / 35000v and below, made of EVA resin material, light and comfortable, and good insulation effect.

AC Voltage Test	Withstand Voltage of The Whole Garment Layer KV	20/40
	Withstand Voltage of The Whole Garment Layer KV	30/50
Resistivity Measurement	Withstand Voltage Along Surface Power Frequency KV	100
	Volume Resistance Coefficient of The Inner Layer Material Ω	≤1×10 ¹⁰



Sleeves for 20kV Live Working

This insulating sleeves are to protect workers from electric shock. It is mainly used in the workplace where the AC voltage is 17KV-26.5KV and the DC voltage is less than 39.75KV. Natural rubber material, good insulation performance.

Standard: IEC60984

Model	Ltem	Test Verification Voltage (V)	Maximum Use Voltage (V)
RZTX-2	class2	20000	17000
RZTX-3	class3	30000	26500





Screening Clothing

It is suitable for personal protection of equipotential operation on electrical equipment of 500kV and below voltage level, to prevent the injury of electromagnetic wave to human body. This product is made of metal fiber and silk blended with monel alloy wire and twisted interweaved, the product has excellent and reliable electrical performance and flame retardant performance, the traditional style of clothing style has been improved, making it more practical, beautiful, comfortable, safe and reliable. When wearing, it must be used with conductive gloves, conductive socks, conductive shoes and other supporting products together, and the multi-strand metal connection wires of each part shall be connected in accordance with the prescribed order, and shall not contact the skin.

Model	Test Item	Test Result
RZPBF-01	Fabric Shielding Efficiency (dB)	(Standard Value≥28) 43.92
	Fabric Resistance (mΩ)	(Standard Value≤300) 29.36

Anti-arc Clothing

Anti-arc clothing has the function of flame retardant, heat insulation, anti-static, anti-arc explosion, will not cause failure or deterioration due to water washing. Once the arc protection suit is exposed to arc flame or hot, the internal high strength low extension bullet-proof fiber will automatically expand rapidly, so that the fabric thickens and density becomes high, forming a protective barrier to the human body.



NFPA70E Danger Level	ATPV Level Range	ATPV	Layers of Clothing
Class1	6cal≤ATPV Value < 8cal	5cal	Single Layer
Class2	8cal≤ATPV Value < 25cal	15cal	Single Layer
Class3	25cal≤ATPV Value < 40cal	25cal	Double Layers
Class4	ATPV Value≥40cal	44cal	Three Layers

Safety Harness



JTAQD-01



JTAQD-02



JTAQD-03



JTAQD-04



JTAQD-05



JTAQD-06

Safety Shoes(Anti Smashing / Anti Piercing)

Size: 38/39/40/41/42/43/44



Positive Pressure Air Breathing Apparatus

It is mainly used in chemical industry, ships, petroleum, smelting, factories and mines, etc., so that operators or rescue personnel can safely carry out fire fighting, emergency rescue and rescue work in harsh environments full of thick smoke, poisonous gas, steam or lack of oxygen.



Safety Goggles

Suitable environment: anti-shock, anti-splash, grinding and cutting, anti-wind and sand, anti-ultraviolet industry, etc.



Gas Mask

Protective Clothing for Sulfur Hexafluoride

Application

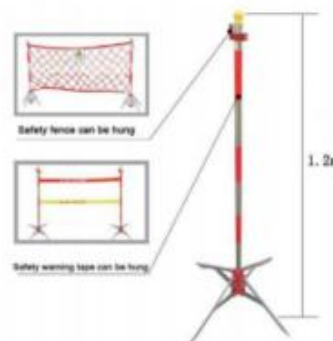
- ☆ Chemical, pharmaceutical, petroleum and fire protection industries;
- ☆ Tank cleaning, equipment overhaul and maintenance;
- ☆ Emergency Accident Handling, Environmental Pollution Handling;
- ☆ Medical hygiene and Disease Prevention and Control;
- ☆ Nuclear industry radioactive particulate matter, dust protection;



Electric Safety Fence Net

Nylon net is made of high quality nylon rope which is resistant to aging .

Seine is made of support ,red and white nylon rope or other colors and eye-catching identification of the small flag combination , the small flag after coating treatment , similar to the poncho has stronger sun protection and rain protection function .power plant , substation equipment maintenance , experiment ,distribution maintenance and other occasions .

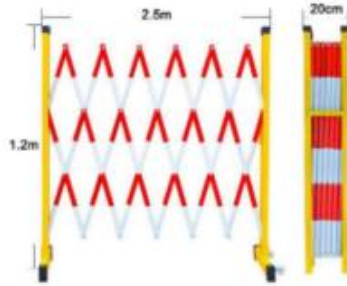


Stainless Steel Umbrella Bracket

Stainless steel tube of choice , the base is flat iron sheet with umbrellaform drinkage counterweight. weight 3KG ,height 1.2m ,easy to carry and retract , the hanging rod can be customized according to the seine width .

Fiberglass Extension Fence

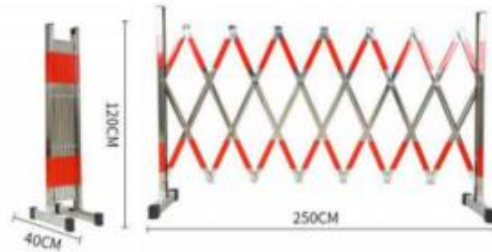
Fiberglass extension fence is mainly used for electrical equipment maintenance ,electrical experiment, power distribution maintenance and so on in power plants and substations . It has the characteristics of flexible,simple operation , beautiful specification and practical .



Regular size 1.2m*2.5m, the length can be customized

Stainless Steel Telescopic Fence

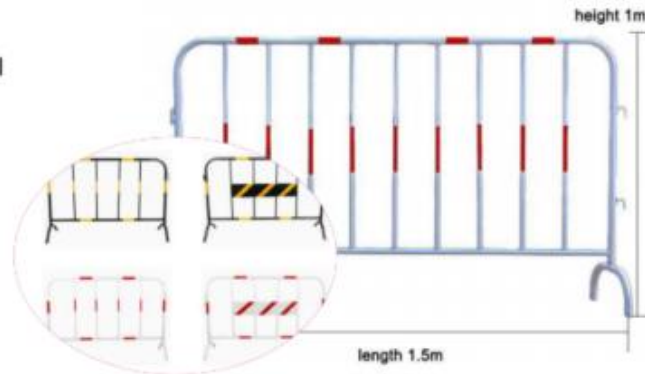
Stainless steel telescopic fence is a safety warning ,maintenance products and upgrade style, with good tensile resistance , anti-ware ,rain-proof , anti-aging and so on characteristics . The stainless steel telescopic fence is widely used in banks,stations,hospitals, airports ,subway and other public places , in addition to widely used in power distribution overhaul ,electrical overhaul , reconstruction construction ,transportation , the company set up cordon and other stop places .



Regular size 1.2m*2.5m, the length can be customize

Iron Horse Guardrail

Iron horse guardrail using galvanized process , surface paint process , conventional specifications 1.5m long , 1m wide , both sides of the hook connected , bright color , often used for barricades , road construction ,etc .



Sign Plates

The sign plates have aluminum reflective ,PVC and stainless steel etc three different material,should be installed in a visible place , easy to see , with anti-corrosion , waterproof , sunscreen ,not easy to fade characteristics .

Pattern can be customized



Disc Warning Tape

Warning Tape is the construction area ,highways , environmental protection engineering block ,used to delineate the accident scene or special warning area , can be reused .

Material: Polyester

Specification : regular length 50m,width 4.5cm (length 20-100m customized)

Color: Red

Text: Customized according to requirements



Electric Red Cloth Mantle

Product features: eye-catching color, the use of warning function.

Overview of red cloth mantle: magnetic suction red cloth mantle, tethered red cloth mantle.General print: operation, operation, commissioning and other words.

Horizontal and vertical typesetting can be performed according to customer ' s requirements.

Detailed specification of red cloth mantle

1. Magnetic suction red cloth mantle

Generally used for indoor, printing "distribution board with running", "running running equipment debugging equipment", "running equipment", "debugging equipment" and so on.

Regular specification:

0.4*0.6m, 0.80*1.5m, 0.8*1.2m, 5*1.2m, 0.8*1.6m, 0.3*0.7m, 0.15*0.7m, 0.15*0.25m, 0.15*1m, 0.3*1.5m, 0.8*2.4m, 0.4*1m, 0.2*1m

2. Tie rope type red cloth curtain

Generally used outdoors, printed "stop, high pressure danger", "maintenance area", "danger point" and so on.

Regular specification: 0.35*1m, 0.3*1.5m, 0.3*2.5m, 0.3*3m, 0.4*1m, 0.3*0.24m



Magnetic Suction Warning Belt



Plastic Steel Fence

The installation of the plastic steel guardrail can greatly improve the installation speed, Universal undertaking connection makes the guardrail easy to install on the slope or uneven ground at any Angle, in different directions, Harder than the wood, More elastic and high flush resistance than cast iron, Long service life: PVC guardrail protection, Due to the use of a special formula and an anti-UV stabilizer, Thus will not fade, yellow, peel, decay, crack, bubble, warp, and moth, Although the PVC guardrail net is slightly higher than the ordinary iron art guardrail, But the PVC guardrail does not require paint maintenance, Is several times the ordinary guardrail.



Pole Climber

The pole climber are made of seamless tube and heat treated with high strength ,good adjustability ,safety and reliability ,easy to carry an so on.



Electrician Climbing Board

Application	Working at Height	Max Loading	300KG
Board Thickness	26mm	Board Length	62cm
Rope	16mm*1.8m	Material	Wood



Wind Voice Bird Repeller

Bird Repeller

	Big Size	Small Size	
Wing Length	19cm	Wing Length	8cm
Wing Diameter	8.8cm	Wing Diameter	6.5cm
Lens Diameter	7cm	Lens Diameter	4.4cm
Stick Height	19.9cm	Stick Height	18cm
Total Height	29cm	Total Height	28cm
Rotation Diameter	36cm	Rotation Diameter	18cm



Bird Thorn

Product	Bird Thorn
Material	Galvanized
Steel Wire Diameter	2mm
Steel Wire Length	560mm
Tensile Strength	> 1700PA



Needle Plate Bird Repeller

Solar Intelligent Bird Repeller

This model is a solar three-in-one bird repeller, with triple functions of ultrasonic + strobe light + voice

Specification

- 1.Voltage: DC12v5AH
- 2.Ultrasonic Frequency: 16khz-25khz
- 3.Ultrasonic Pressure: 120db Ultrasonic Generator: 4pcs
- 4.High Power Voice Speaker: 2pcs, 20W Sound Decibel: 120dB
- 5.Voice Category: High-Fidelity Digital Voice
- 6.Strobe Light: High Brightness LED: Lamp Bead Quantity: 8pcs
- 7.Lamp Bead Color: Blue: 4pcs, Red: 4pcs
- 8.Current: Ultrasonic 20ma Voice: 600ma Light: 30ma
- 9.Dimension: (L)250mm x (W)200mm x (H)160mm
- 10.Net Weight: 4.5KG



Fiberglass Bird Guard

Specification

- Diameter: 400-800mm
- Weight: 3-5KG
- Max Loading: More than 60KG
- Wind resistance: 35m/s
- Structure: Separated
- Protective Length: 800-1000mm



Audible & Visible Voltage Detector



Features and Benefits

- ◇ Made of epoxy resin, with high insulation.
- ◇ Function: detect and sense the presence of high voltage existence
- ◇ High sensitivity, accurate detection
- ◇ Loud audible sounds, clearly visible & bright LEDs
- ◇ Telescopic type, small and light weight, easy to carry

Model	Extended	Retracted	Sections
RZD-10KV	1000mm	400mm	5
RZD-35KV	1500mm	500mm	5
RZD-110KV	2000mm	600mm	5
RZD-220KV	3000mm	800mm	5
RZD-500KV	8000mm	1650mm	5

Non-Contact High Voltage Detector

Features and Benefits

- ◇ Non-contact design, safe and reliable
- ◇ With the functions of sound prompt, light prompt, self check
- ◇ High-precision, stable performance, strong anti-interference ability
- ◇ Wide range, easy to use, convenient to carry
- ◇ 8 voltage range switches(380V,6KV,10KV,27.5KV, 35KV,110KV,220KV,500KV)
- ◇ Fiberglass insulating stick is optional



Power Frequency Signal Generator



Full Circuit Electroscop

RZYDH type detector has all the functions and features of the RZD type. In addition, it also has a double self-check function, which has higher safety performance.

Model	Voltage	Extended	Retracted	Sections
RZYDH-01	0.4KV	900mm	170mm	7
RZYDH-02	10KV	1000mm	450mm	4
RZYDH-03	35KV	1500mm	600mm	4
RZYDH-04	66KV	2000mm	750mm	4
RZYDH-05	110KV	2000mm	750mm	4
RZYDH-06	220KV	3000mm	850mm	5
RZYDH-07	330KV	6000mm	1450mm	5
RZYDH-08	500KV	7200mm	1750mm	5



High Frequency Signal Generator



Overhead Line Fault Indicator

The fault indicator is a device that used to indicate the flow of the fault current. It is suitable to used in 10KV to 35KV overhead line.

In case of short circuit or ground fault, the line patrol personnel can quickly determine fault sections, branches and fault points with the help of the red alarm display of the indicator.

This product greatly improves working efficiency and power supply reliability.



Rat Guard(Aluminum / Stainless Steel)

Features:

1. Rat guard can be widely used in power plants, substations, grain warehouses, gas stations, chemical plants, and so on. It has played a very good role in protecting against rodents;
2. The surface of the rat guard is treated with anticorrosion ;
3. The rat guard is installed on the door frame, which is convenient and quick to construct and easy to disassemble;
4. A reflective strip is attached to the top of the rat guard, which is easy to identify at night and prevents people from tripping over;



Aluminum



Stainless Steel

Water Baffle

Stainless steel water baffles are commonly used flood control products, suitable for a variety of natural environments, such as underground tunnel entrances, low-lying places in urban streets and low-lying places in processing plants, etc.

It can ensure the safety of the indoor environment during the main flood season, to avoid flooding during the main flood season.

It does not leak or seep water, can bear a large amount of hydroelectric power generation, and can also be used to widen hard embankments to avoid flooding.



All-In-One Safety Reflective Strip Rubber Seal Metal Screw

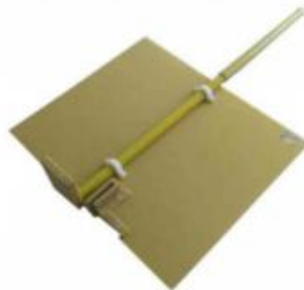
Insulation Barrier

Insulation barrier material using epoxy resin and non - alkali glass fiber cloth soaked pressure drying curing and molding.

Insulation barrier characteristics: high density, not hydrophilic, electrical insulation, high mechanical strength, thin profile, light weight and so on.

Application scope of insulation barrier: isolated with electric part, limit the scope of activities of power operators, prevent misoperation accidents of power safety appliance.

Product size: 500*600mm Withstand grade: 10KV



4 Protection Tools for Live Work

Insulating Blankets

The Resin Insulating Blankets are used as a portable protective device for protection of electrical workers from accidental contact with live electrical conductors, apparatus, or circuits.

The Resin Insulating Blankets are very light and are easy to use compared with rubber insulating products.

Model	Size	AC Voltage Withstand Test	Maximum Use Voltage
RZJYT-01	600*1000mm	20KV/3min	17000V
RZJYT-02	680*800mm		
RZJYT-03	680*1200mm		
RZJYT-04	800*1000mm		
RZJYT-05	900*1000mm		
RZJYT-06	600*1000mm	30KV/3min	26500V
RZJYT-07	680*1000mm		
RZJYT-08	800*1000mm		
RZJYT-09	900*1000mm		



Light Weight Wire Cover

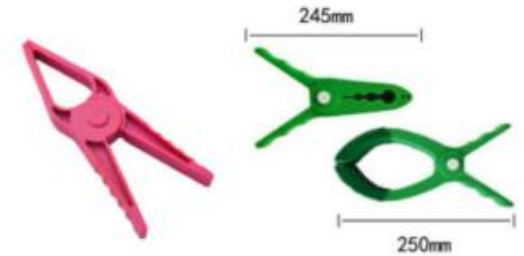
Light Weight Wire Cover is used to isolate insulation protection high voltage wire to avoid inductive accidents during personnel operation. The inner layer is black, UV-resistant, and the outer layer is yellow

Model	Size	AC Voltage Withstand Test	Use Voltage
RZQZZ-01	Φ35*3000mm	20KV/3min	11500V
RZQZZ-02	Φ35*2500mm	20KV/3min	11500V
RZQZZ-03	Φ35*1500mm	20KV/3min	11500V
RZQZZ-04	Φ35*1000mm	20KV/3min	11500V



Clamps Pins

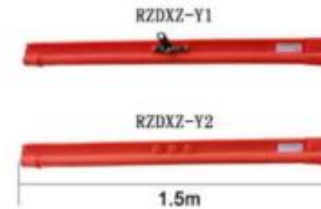
In addition to other uses in the utility industry, Blanket Clamp Pins can be effectively used to hold insulating blankets and rubber cover-up in place.



Application: used for shielding wire and pulling wire during live operation of distribution line; The conductor cover is made of rubber and plastic insulation materials. The Conductor Cover is electrically sensitive and can be divided into Class 0 (380V), Class 2 (6-10KV), Class 3 (20KV) and Class 4 (35KV).

Hard Cover for Conductor

Model	Specification	Class	Weight (KG)
RZDXZ-Y1	Protective cover 1.5m, with a hole	20KV	1.8
RZDXZ-Y2	Protective cover 1.5m, with a hole	20KV	1.4



Soft Cover for Conductor

It is applicable to power distribution lines and power equipment installation and maintenance and other shielding and protection role, to prevent the direct contact with the operators and the live body.

* Good softness in a cold climate to prevent ozone and ultraviolet damage.

* Each interface with a ridge structure ensures a secure connection.

* Unconnected port straight pipe (must be used with the connection pipe), with the connected port

There are two types of straight pipe, each type has 5 specifications: diameter 25mm, 31.5mm, 40mm, 50mm, 63mm.



Model	Class	Size
RZDXZ-R1	10KV	31.5*915mm
RZDXZ-R2	10KV	31.5*1372mm
RZDXZ-R3	10KV	31.5*1820mm
RZDXZ-R4	35KV	40*915mm
RZDXZ-R5	35KV	40*1372mm
RZDXZ-R6	35KV	40*1820mm

Cross Arm Cover

It is used to cover the cross arm of the distribution line during live operation.

Cross Arm Cover	Insulation Class	Size (mm)	Suitable for Cross Arm (mm)	Weight
RZHDZ-01	20KV	368*117*105	102*114	1.4kg
RZHDZ-02	40KV	432*152*140	140*152	2.3kg



height 300mm



internal diameter 104mm



UH Needle Type Insulator Cover

Cover the insulators of up to ANSI C29.55 levels. The sides are cut and can be used on small insulators without relying on the transverse arm. When covering an insulator of 7 inches in diameter on the two-arm structure, the end of the insulation cover will contact the plane at the center of the pin.

Model: UH Needle Type Insulator Cover

ASTM grade: 3

Matching line pipe size: 40

Inner diameter*height: 184*300mm

Weight: 4.4kg

Drop-out Fuse Cover

To cover the drop-out fuse when in live working.

The soft Drop-out Fuse Cover is made of elastic rubber resistant to corona discharge. Electrical insulation effect is good, convenient installation, and can be installed with the insulation operating rod.

Model: RZDLZ-01

Size: 600x376x88mm

Feature: soft and elastic, easy operation

Weight: 2.3KG

Insulation grade: 2



Fuse Cover

The Fuse Cover can help to protect the operation of most open fuses with ratings of 25KV or less for linemen, but it is not suitable for break lever fuses or similar devices.

On the fuse, slide the locking pin through the back of the fuse insulator and through the hole on the other side of the shelter.

The pinholes on the shelter and keyhole can be installed with a wire clamp.

The Fuse Cover is made of orange ABS plastic and some parts can be nested together for easy loading in the truck.

Weight: 1.8kg



Rubber Insulated Jumper Protection Pipe

Rubber Insulated Jumpers, made of high quality insulation material, can be used for wire shielding and drainage wire shielding and are available in various sizes.

The wire pipe is used to protect the electrical operators from mistakenly touching the live body, equipment, or circuit, socket and coil design insulated wire pipe for convenient installation and removal.

Model	Size(mm)	AC Test Voltage	Max.Use Voltage
RZTXZ-01	Φ30*600	20KV/3min	17KV
RZTXZ-02	Φ30*800	20KV/3min	17KV



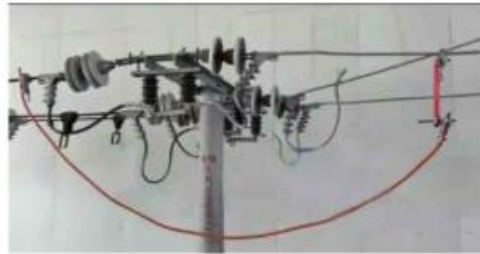
Insulated Jumper Clamp Sets

Quickly connect the equipment for power distribution line in live operation, which can be temporary or long-term used. It is widely used in power grid, power plants, power distribution stations, mines, large ships, construction sites and other power maintenance and power install.

They have been widely used in the U.S. military power emergency repair.

A complete set of jumpers includes: 2 jumper clips, 2 compression sleeves, and 1 wire Length customizable.

Model	Use Voltage/KV	Rated Current/A	Length/M	Jumper Conductor Clamper Structure
RZYLX-01	15	200	3	Metal Clip Head
RZYLX-02	15	250	3	Metal Clip Head
RZYLX-03	15	300	3	Metal Clip Head
RZYLX-04	15	400	3	Metal Clip Head
RZYLX-05	25	250	3	Metal Clip Head
RZYLX-06	25	300	3	Metal Clip Head



Insulation Bucket

Power overhead hanging bag and brace belt tool bag

Application: used for lifting or storing bolts when working at high altitude, bag mouth suction ring.

Load capacity 20KG

High - altitude load lifting bag round sleeve support insulation bag bucket outer round sleeve tool bag available.

Specification	Notes
φ250*265	Standard type hanging bags
φ180*210	Smaller type hanging bags
φ290*150	Shallow type hanging bags



Insulating Rubber Sheet

The Insulating Rubber Sheet has good physical and mechanical properties and excellent insulation performance. It can work in the dry environment of -35~+100°C air medium electrical coefficient requirements.

Suitable for the laying of electronic workbench and ground, power station, substation ground laying and installation;

It should be stored in a dry and ventilated environment, away from heat sources and at least 20cm away from the ground and walls. Avoid acid, alkali and oil pollution, do not place in the open to avoid direct sunlight.

Size	Weight	Size	Weight	Size	Weight
1m*30m*1mm	50kg	1.2m*25m*1mm	50kg	1.5m*30m*1mm	75kg
1m*20m*1.5mm	50kg	1.2m*16m*1.5mm	50kg	1.5m*20m*1.5mm	75kg
1m*15m*2mm	50kg	1.2m*12.5m*2mm	50kg	1.5m*15m*2mm	75kg
1m*10m*3mm	50kg	1.2m*8m*3mm	50kg	1.5m*10m*3mm	75kg
1m*7.5m*4mm	50kg	1.2m*6.3m*4mm	50kg	1.5m*7.5m*4mm	75kg
1m*5.5m*5mm	50kg	1.2m*4.6m*5mm	50kg	1.5m*5.5m*5mm	75kg
1m*4.7m*6mm	50kg	1.2m*4m*6mm	50kg	1.5m*4.7m*6mm	75kg
1m*3.6m*8mm	50kg	1.2m*3m*8mm	50kg	1.5m*3.6m*8mm	75kg
1m*3m*10mm	50kg	1.2m*2.5m*10mm	50kg	1.5m*3m*10mm	75kg

Electrical Insulation Performance Test	Sheet Thickness	Time Required for Power Frequency Voltage Test	Standard Value	Actual Time	Actual Value
10KV	5mm	1 min	10KV	2 min	≥15KV
15KV	6mm	1 min	10KV	2 min	≥15KV
25KV	8mm	1 min	25KV	2 min	≥30KV
35KV	10mm	1 min	35KV	2 min	≥35KV
35KV	12mm	1 min	35KV	2 min	≥35KV



Wire End Cap

Suitable to shield wire ends when live working on distribution line.



Model	Working Voltage	Length	Inner Diameter
RZH029-30	0.4KV	124mm	33mm
RZH029-40	0.4KV	158mm	49mm



Model	Working Voltage	Length	Inner Diameter
RZMD-01	10KV	260mm	37mm

Fuse Cover (Rigid Type)

Suitable to shield the fuse when low voltage live working.



Model	Working Voltage	Size	Net Weight
RZH054	0.4 - 1KV	190 X 48mm	150g

Fuse Cover (Flexible Type)

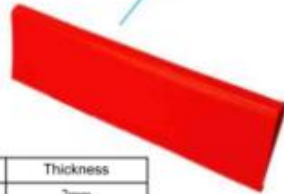
Suitable to shield the bus bar when low voltage live working



Model	Working Voltage	Size	Thickness
RZH053	0.4 - 1KV	345 X 70mm	2mm

Bus Bar Insulating Cover

Suitable to shield the bus bar when low voltage live working.



Model	Working Voltage	Length	Thickness
RZJ1073	0.4 - 1KV	360mm	2mm

Line Hose (Ω Rigid Type)



Model	Working Voltage	Length	Diameter
RZLH-01	0.4 - 1KV	1000mm	33mm

Insulator Cover

Suitable to shield the Insulator when low voltage live working.



Model	Working Voltage	Length	Height	Inner Diameter
RZJ1078	0.4 - 1KV	360mm	180mm	100mm

Conductor Cover



Pole Guard

Personal Protective Ground Mat

Product features and applications

It meets the equipotential requirements of OSHA1910.269 in the vicinity of live working vehicles and in substations or underground equipment switches, and meets ASTM F2715 standard.

Portable, light and high performance;

Three simple methods to help establish an equipotential zone line;

In full compliance with occupational safety standards OSHA1910.269 of the health administration;

Can be used anywhere, simple to use, maintain and store;

A mesh pattern sewn onto a vinyl polyester fabric by a high-current-carrying standard copper wire;

Cable terminations allow connection of pad's grid to electrical series, ground or component or vehicle connections;

All grounding nets care for simple flushing with water;

The grounding mat can be folded and stored in a tool bag to keep it clean and protect it.



Insulation Hook

Epoxy hook: for live work with tool tray, tool plate or storage bag.



Pole Clips

Used for fixing insulation blanket or pole blanket during live operation of distribution line

Max.Open Diameter 340mm

Size: 365mm(length) * 160mm(width)



Chain Saw



High Branch Chain Saw

The host weight: 2KG

Electric remote control operation, can saw the height of 8m branches, 100mm branches, sawing 5 seconds, a battery can saw 110 branches of 100mm branches.

Introduction: Many times high branches need to be removed, people will use saws, existing saws, there are chainsaws, chainsaws, hand saws, they have many problems:

1) Chainsaw weight is too large, generally 10kg, not easy to carry, not easy to take up the mountain to saw branches, saw high branches to climb with the saw, it is very difficult.

2) Manual sawing is very inefficient.

3) Some of the existing high branch saws can only saw four to five meters high branches, the weight is too large, can not be adjusted according to the geographical environment of the chainsaw length, it is not convenient to use, the chainsaw is not insulated, easy to be electric shock in the process of operation, sometimes by lightning high-voltage power grid electric shock phenomenon, causing casualties. The multi-functional portable electric remote control insulated chain saw with operating rod can be determined according to the demand of the number of operating rod, to different lengths, no need to climb trees.

No need to load elevator, high efficiency, light weight, safe, reliable, convenient; And the operating rod is provided with epoxy resin and fiber, chain saw body shell is made of nylon and fiber, has good insulation performance, to ensure that not be electric shock.

Insulated Cable Puller



Disassembly Rod Of High Voltage Parallel Trench Clamp Mounting Tool

Main material: aluminum alloy
 Install the cable clip model: JBL - 50-240 (three)
 Number of cable clips that can be installed at one time: 1
 Clip fixing method: quick clamp (GH-36070)
 Wire fixing mode: quick clamp (GH-101-A)
 Connection mode with operating lever: spline plug connector
 Functions: it can be used for power outage and live work respectively by replacing operating lever.

Technical parameters:
 Applicable wire: XLPE insulated wire, cross section 50mm²-240mm (special type can be customized)
 Peeling operation: single operator

Operation nature: for power failure operation, BPG-8 type operating rod can be used for peeling operation on power failure line

Live operation: BPG-15 operating rod can be used on the running line, working voltage of 10KV, non-rain and snow environment charged for peeling operation.

Insulation length of operating rod: 0.7m (BPG-15 operating lever)

Power frequency withstand voltage of insulated operating lever: 100KV / 1min / 0.4 m (type BPG-15 operating lever)



Insulated Steel Core Aluminum Stranded Wire Cutter

Product description: used for steel core aluminum stranded wire; ACSR16mm, steel cable 16mm, aluminum cable 24.5mm, mild steel bar 11mm, rope 16mm

Product No.	Instruction	Weight(kg)
1-11	a full set of cutting knife	2.72
1-12	replace the handle	1.36

Material: hard alloy



Description: Cut off steel core aluminum stranded wire below 12mm², copper wire below 15mm², and aluminum wire below 3mm²
 Length: 788mm, weight 2.7kg

Insulation Tool Hanging Rack

Ground potential live operation, the tool placement frame can be fixed on the cross arm, can be fixed on the placement plate through the hook of the operating rod, through the rotation of the placement plate, convenient to take the tool, and the bottom has an insulating pulley, can be convenient to lift the tool, according to the specific use of the tool will be divided into a variety of.

The operating rod hanger is specially designed for the convenience of using insulating tools when working on the rod with electricity.

There is also a tool hanger for ground use, which is simple and convenient to use, can effectively reduce tool selection error, improve workers' work efficiency, reduce live operation time, and reduce the accident rate.



Live Work Operating Rod Wire Brush

Used to clean electric wires when insulation rods of distribution lines are operating. The semi-circular design fits the wire more effectively, and the hard wire bristles can clean the oxide layer and foreign matter on the wire surface.

Maintenance and care:

Electric brushes shall be stored in clean, dry and vertical suspension to prevent damp and bending. Use the dirt from the rear hair brush and wash it with gasoline to keep it clean.

Insulated Wire Stripper

Cutting the insulation layer of the overhead cable under live condition creates conditions for live fire operation; low cost, fast speed, simple operation, extensive use, and unrestricted geographical environment mirror design make the vision clearer and ensure the peeling quality.

Voltage Grade	Conductor Cross-section	Cutting Length	Main Weight
0.6KV-10KV	30-300mm	40mm	1.5kg

Features:

Large stripping range, with steel core and aluminum insulation wire can be removed

The stripping process is as smooth as flowing water, there will be no stuck line.

One clamping can complete peeling, cutting and exit work.

Aluminum alloy head light, more suitable for high altitude work.

The body stripping head, insulating rod and operating handle can be disassembled for easy carrying.

For non-standard wire, the stripping blade can be adjusted up and down, front and back, in order to achieve good stripping effect

Scope of application: outside diameter 10-32mm insulated conductor



TOOL BOARD

- Designed for easy removal and installation
- Tool board is used with tool hanger hooks – see page 709
- Tool board can be used on curved, square, and rectangle bucket designs
- Each board has a four pocket leather tool pouch, leather knife pouch, nylon loops, and hammer loop
- Utility bag is made from heavy duty cordura
- A wide leather loop is riveted on the top of bag for easy access with rubber gloves
- Also available with lights above the cordura bag and lights along the entire bottom of board. Ideal for night time and low light conditions. Battery and switch operated. 2 AA batteries included.



BOOM MOUNTED HOT STICK HOLDER

- Boom mounted holders are made with durable molded fiberglass
- Ratchet load binders for attachment to the boom
- Will hold four hot sticks 1 1/4" – 2" diameter
- Adapts to square, rectangular, round, and oval booms

BOOM MOUNTED PRUNER / SAW HOLDER

- Pruner / saw holder provides an excellent method for storage of hydraulic tools during line clearance work
- Boom mounted tool holders are constructed with fiberglass laminates
- Ratchet load binders with 1" wide nylon straps secures holders firmly to boom
- Gravity type latch secures control end of tool and is easy to open and close
- Unit adapts to square, rectangular, round and oval booms



HYDRAULIC IMPACT WRENCH AND DRILL HOLSTER (DBCYJ-021,DBCBS-02)

- Attaches to buckets with and without liners
- Holder can be mounted inside or outside
- Top bracket can be moved to either side to enable holder to be used right or left handed
- Two models to choose from
- Two drill bits can be stored in the multi-purpose holder
- Includes velcro hold down strap to keep wrench in place

FIBERGLASS BUCKET STEP (DBCBS-01)

- Makes it easier to get into and out of buckets
- The step on surface has an anti-skid material to help prevent foot slippage
- Two models available for buckets with and without liners
- Dimensions – 26" Long x 8 1/2" Wide x 8" Deep

CHAIN SAW SCABBARD (DBCYJ-02)

- Designed for gasoline or hydraulic powered chain saws
- Mounts on bucket for quick and easy access
- Provides safe and convenient storage on bucket
- Prevents accidental damage to chain
- Non-conductive fiberglass
- Keeps greasy contaminants off truck
- Scabbard is easily removed for inspection and cleaning
- Will accommodate saws with blades up to 36"
- Overall length of scabbard 36" – Opening 3" x 5 3/4"



- Fits buckets with or without liners

LIGHT HOLDER

- Designed to mount to all fiberglass buckets with and without liners
- Holder is made from fiberglass laminates and is dielectric
- Has adjustable clamp bracket and is easy to install and remove
- Allows user to position light for maximum use
- 10-137 Rechargeable Lantern sold separately



separately

5 Electric Construction Tools



Nylon Pulley

It's mainly used to protect cables and wires, save time and labor, and play the role of ground cable pulley, used for cable extension and change direction, protecting the cable from friction.



Size (mm) (Diameter*Width)	80*35	80*50	100*35	100*50	120*35	120*40	120*60	120*80	120*100
Wire Rang (mm ²)	25-120	25-180	25-150	25-180	25-150	25-150	25-240	25-300	25-300
Weight (KG)	1	1	1.25	1.25	1.25	1.3	2.75	3	3.5
Hook Bearing	0.5T	0.5T	0.5T	0.5T	0.5T	0.5T	1T	1T	1T

Size (mm) (Diameter*Width)	150*40	150*45	150*60	150*75	200*50	200*60	250*60	320*60	320*70
Wire Rang (mm ²)	25-150	25-150	25-240	25-300	25-150	25-240	25-240	25-240	25-300
Weight (KG)	3.5	3.5	3.5	4	4	4.5	6	7	8
Hook Bearing	1T	1T	1T	2T	2T	2T	2T	3.2T	3.2T

Aluminium Magnesium Alloy Wire Grip

Clamp the insulated wire, adjust sag, tighten and fix the wire, high strength stainless steel material, light weight does not damage the insulation layer.

Model	Rated Load	Wire Rang	Open Size	Weight
RZKXQ-01	7KN	LGJ25-70	14mm	1kg
RZKXQ-02	15KN	LGJ95-120	18mm	1.4kg
RZKXQ-03	25KN	LGJ150-240	24mm	3kg



Hand Puller

It's made of alloy steel with high strength and high tensile force. Used for fastening conductor, easy to operate, durable.

Model	Rated Load	Diameter and length of steel wire	Handle Length	Hook Distance
RZJXQ-1.5	1.5T	5mm x 2500mm	360mm	430mm
RZJXQ-2	2T	5mm x 2500mm	450mm	530mm
RZJXQ-3	3T	6mm x 3500mm	550mm	630mm



Hydraulic Pliers

Hydraulic pliers are professional hydraulic tools for crimping cables and terminals in power engineering. There are integral split, electric, manual etc.

Tool Parts	Parts Name	Function
	Chisel	Clear insulator surface ice, can also be derived from synthetic insulator surface ice
	Shovel	remove ice and ice edges of electrical equipment and insulators
	Crescent shovel	remove ice and ice edge of electrical equipment and insulators
	Hoe	hook off the long ice on the transformer equipment, hook out the ice edge between the insulator group, and break the ice on the surface of the insulator
	Axe	cut off the ice on the surface of the insulator and hook out the long ice strip of the equipment
	Double chisel	Clear the ice edge between the crevices of the vase
	Universal hook	remove the ice edge between the control group of insulators, not affected by the distance between the umbrella skirt, and can break the ice on the surface of insulators

Deicing Tools

Used to remove snow and ice on porcelain vase, bracket, wire and tower caused by rain and snow in winter.



Safety Rope

The safety rope is woven with synthetic fiber, used to connect the auxiliary rope of safety belt and play the role of double protection.

Generally, the length of 2m, 2.5m, 3m, 5m, 10m and 15m, above 5m can also be used as a sling rope.

Model:

4mm, 6mm, 8mm, 10mm, 12mm, 14mm, 16mm, 18mm, 20mm, 22mm, 24mm, etc.



Gasoline Grinder



Rotary Multi-function Wire Stripper

Mainly used for quick stripping of insulated wire, overhead wire and cable terminal and middle section. Stripping diameter ϕ 12mm-40mm; Stripping thickness: terminal stripping less than 6mm, middle stripping less than 4mm.

Length: 27cm N.W.: 0.95kg G.W.: 1.15kg



Cable Cutter

RZDLJ-01



Cut below 720mm² of aluminum cable steel reinforced
Cut below 150mm² steel strand

RZDLJ-02



Cut below 630mm² of aluminum cable steel reinforced
Cut below 150mm² steel strand

RZDLJ-03



Cut below 1440mm² of aluminum cable steel reinforced

RZDLJ-04



Cut below 820mm² of aluminum cable steel reinforced
Cut below 150mm² steel strand

RZDLJ-05



Cut below 930mm steel wire rope

RZDLJ-06



Big split cut below 300mm² aluminum-steel cable
Small split cut below 60mm steel wire rope

RZDLJ-07



Cut below 300mm² aluminum-steel cable

RZDLJ-08



Cut below 340mm² aluminum-steel cable

RZDLJ-09



Cut below 520mm² aluminum-steel cable

RZDLJ-10



Cut below 300mm² copper and aluminum core armored cable
Cut 1000 pairs of communication cables

RZDLJ-11



Cut below 300mm² copper and aluminum core armored cable

RZDLJ-12



Cut below 3x120mm or 970mm copper and aluminum core armored cable
Cut 900 pairs of communication cables

Electro-hydraulic Punching Machine

Voltage	220V/110V
Power	1200W
Throat Depth	35mm
Capacity	10T
Copper / Aluminum Plate	thickness≤8mm
Iron / Steel Plate	thickness≤6mm
Punching Speed	2-3 seconds
Punching Diameter	4.2-20.5mm
N.W	15KG
Standard Mold(mm)	Φ6.5, Φ9, Φ13, Φ17, Φ20.5



Electric wire stripper



Product name : Electric wire stripper

Cutting range : Ω50-300 wire

Battery : 18V/4.0Ah

Weight : 2KG , with a battery

Bushing configuration :

13.2,14,14.8,15.6,16.4,17.2,18,18.8,19.6,20.4,21.2,22,22.8,23.6,24,4,25.2,26,26.8,27.6,28.4

Insulated ratchet wrench

Product feature:

1. Insulated handle and universal head design , suitable for different nuts.
2. Two-way ratchet lock , safe and reliable .
3. Bidirectional operation , easy to change ,easy to tighten.
4. High strength material body ,light weight and durable.



Specifications:

Model	Application range	Length	Weight	Withstand voltage
RZJLBS-01	Bolt: M10, M12, M14, M16 Nut: 17, 19, 22, 24	250mm	0.65KG	20KV
RZJLBS-02	Bolt: M10, M12, M16, M20 Nut: 17, 19, 24, 30	270mm	0.90KG	20KV
RZJLBS-03	Bolt: M6, M8, M10, M12 Nut: 10, 14, 17, 19	220mm	0.60KG	20KV

Cable unwinding pulley



Power torsion free wire rope

Material and Structure	Nominal party size	OD	Filaments diameter	Weight/1000m	Breaking force	Winching Scope
Hot galvanizing 1*19w	9mm	11mm	2.0mm	280.0KG	5T	3T
Hot galvanizing 1*19w	11mm	13mm	2.5mm	480.0KG	8T	3T, 5T
Hot galvanizing 1*19w	13mm	15mm	3.0mm	580.0KG	12T	3T, 5T
Hot galvanizing 1*19w	15mm	18mm	3.5mm	780.0KG	15T	5T
Hot galvanizing 1*19w	18mm	20mm	4.0mm	980.0KG	18T	8T



Hydraulic Pay-off Rack

Hydraulic Pay-off Rack belongs to the technical field of design and manufacturer of layout frame for transmission line erection and maintenance. There is a main bracket on the stiffeners of the base. A bearing is provided at the center of the bearing fixing plate. There is a jack on the pad. A rear support frame is provided on both sides of the main support. The walking wheel is provided with a walking wheel fixing plate.

Hydraulic Pay-off Rack

Model	Height	Base Size	Loading	Support Tube	Support Tube Diameter
RZFXJ-01	1.5m	50*45cm	5T	1.72m	72mm
RZFXJ-02	2m	60*55cm	8T	2.5m	90mm
RZFXJ-03	2m	60*55cm	10T	2.5m	90mm





Enhanced Type

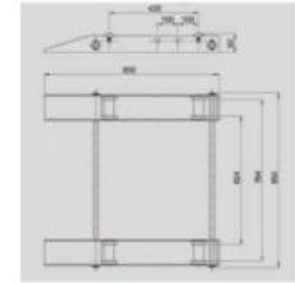


Economical Type

Horizontal Cable Stand

Product Information	Diameter	Rated Load	Steel Thickness	Weight
Economical Type	0.5m	0.3T	0.6cm	15KG
	0.8m	1T	0.6cm	37KG
	1.0m	3T	0.6cm	60KG
Enhanced Type	0.8m	3T	0.6cm	44KG
	1m	5T	0.6cm	60KG
	1.2m	8T	0.6cm	80KG
	1.5m	10T	0.6cm	105KG

Rated load	kg	1000
Applicable wire coil diameter	mm	Ø300-Ø1000
Applicable wire reel width	mm	300-750
Dead weight	kg	30.8



Triangle Hydraulic Pay-off Rack



Portable mechanical punching machine

It's suitable for punching, repairing and reaming of cross load of distribution network and tower material of transmission line.

Features:

- 1.The machine is made of high quality high strength alloy steel. It has the characteristics of high strength, light weight and durability.
- 2.The design structure is simple, easy to operate, no power supply, time saving, labor saving, suitable for aerial work.

Simple Cable Stand

Application Scope:

It's used to support the lead tray with supporting cargo fork when laying out wire in the field;

Combined structure, easy to disassemble, pack and transport.

Notes:

Only suitable for use on flat field;

The cable tray rotation speed should be less than 2km/h and can't be turned into operation;

When loading the wire tray, the load should be reasonably distributed according to the load of the wire rack and forklift, not allowed overload or partial load;

Wheel bearings and rotating shaft parts should be checked regularly every 3 months, add lubricating oil (grease), check and lock each pin shaft and movable parts;

Lock the T-screw to ensure that it will not shift with the cargo fork;

When discharging and retracting the line, both hands should be used to brake in time.

Special note:

This machine is not insulation antistatic material, so as to avoid personal safety accident, it's not allowed in the environment with strong acid, phenol, chlorine, sodium hypochlorite, barium chloride, etc. When the operating temperature exceeds 120 for a long time.

Model	Application Scope	Allow plate thickness	Punching diameter	Weight	Size	Output	Standard force
RZCKJX-01	< 40- < 110A3F	< 10cm	13,15,17,19,21mm	15.5KG	340*280*70mm	300KN	< 0.25KN



Pole Truck

A utility vehicle used to transport concrete poles during electrical construction



Size specification
 1 width 45cm
 2 vehicle width 80cm
 3 pipe diameter 6cm
 pipe thickness 5mm
 4 curved wall width 5cm
 thickness 8mm
 5 total length 150cm
 6 tire outer diameter
 7 tire inner diameter
 8 tire width 18cm

Cable trailer

Usage: mainly used for short distance transportation of cable tray, also can be used as the cable tray construction.

1. Having a whole overturned structure, also have wire tray lifting structure for liquid oil cylinder operation.
2. There are two tires layout, trailer structure can be separated to facilitate transportation.



No	Mode	Applicable reel			Axel diameter(mm)	Dimension(mm)	Weight (kg)
		Width(mm)	Diameter(mm)	Weight(kg)			
1	RZDLTC-01	1500	φ2400	4000	φ65	3645*2500*1500	800
2	RZDLTC-02	1600	φ3200	8000	φ89	4560*2708*1857	1200
3	RZDLTC-03	2360	φ3600	12000	φ95	6000*3370*2770	2500



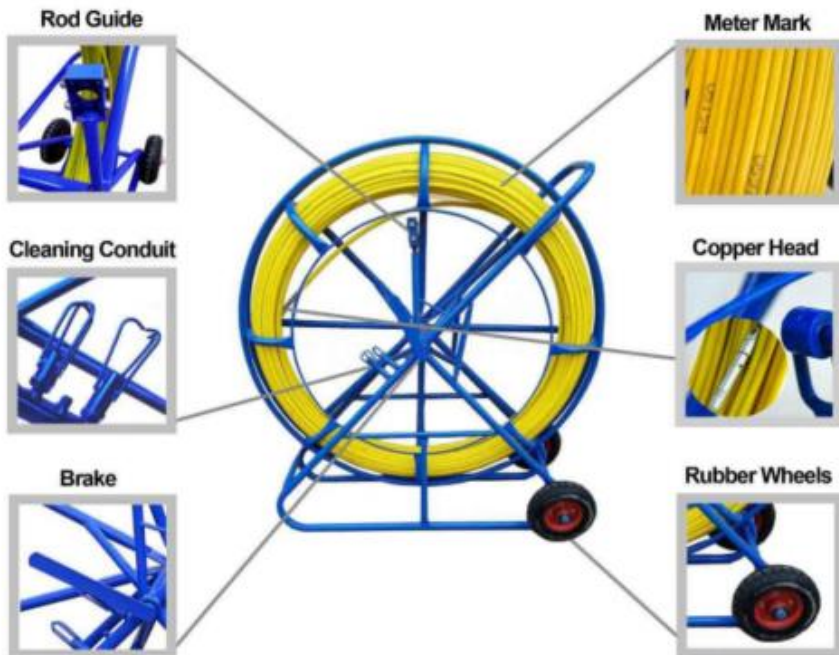
6

Communication Construction Tools

Coduit Rodder

Fiberglass conduit rodder is idea for underground operations , such as pulling cables and lines through pipes or conduits. With its high tensile strength,wear resistant surface and elastomer, it' s widely used in telecommunications ,electric power , water conservancy and other filed .

Diameter of Rod	φ4.5mm,φ6mm,φ8mm,φ9mm,φ10mm,φ11mm,φ12mm,φ13mm,φ14mm, φ15mm,φ16mm
Length of Rod	50m ~ 500m (the length can be customized)
Bending Radius	330mm
Fibre Density	210kg/m
Fracture Strain	4200kg
Application Temperature	-40°C to +80°C



Cable Grips

Used for installation of power cable, communication cable and optical cable.

Model	Size Range/mm	Mesh Length /mm	Total length/mm	Breaking load/kN
RZDLWT-01	13-18	450	650	10
RZDLWT-02	18-25	500	750	15
RZDLWT-03	25-37	600	850	18
RZDLWT-04	37-50	700	1000	35
RZDLWT-05	50-63	900	1250	45
RZDLWT-06	63-75	1050	1450	60
RZDLWT-07	75-90	1250	1650	70
RZDLWT-08	90-110	1350	1750	90
RZDLWT-09	110-130	1500	2100	110
RZDLWT-10	130-150	1600	2200	140
RZDLWT-11	150-180	1900	2500	150
RZDLWT-12	180-220	2200	2800	180



D Type Shackle Bow Type Shackle



Cable Swivel

Model : RZXZQ-3T , RZXZQ-5T , RZXZQ-8T



Optical Cable Attached Hanger

This is hand-held high-free cable attaching tool with circuit components such as controllers placed inside,which can automatically complete all the steps of cable attaching and strapping. It can be widely used in the field of communication engineering aerial work ,instead of traditional manual attaching and strapping cables. The tool organism ,coil,battery ,remote control switch , handheld rod five major components .



Cable Conveyor

Cable Conveyor



RZDLQY-01



RZDLQY-02



RZDLQY-03



RZDLQY-04



RZDLQY-05



RZDLQY-06



RZDLQY-07



RZDLQY-08



RZDLQY-09

Optic Cable Pulling Equipment



RZGLQY-01



RZGLQY-02



RZGLQY-03



RZGLQY-04

Multi-function cable stand

Bear weight: within 150KG

Material : Aluminum alloy

Specification: 24x3x2cm

Quantity : 2 pieces/ set

Application range: disc shaft thickness \leq 20cm



Network cable Pay-off rack

Style	Cable model	Fiber model	Fiber optic bearing model	Bearing pull car model
Size	40cm*33cm	45cm*40cm	45cm*40cm	45cm*40cm
Bear weight	80kg+	80kg+	80kg+	80kg+
Axial total crude	2.5cm	2.6cm	2.6cm	2.6cm
Herringbone frame	Yes	Yes	Yes	Yes
High line level	Yes	Yes	Yes	Yes
Fold the lock shaft	Yes	Yes	Yes	Yes
Anti-rubbing edge	Yes	Yes	Yes	Yes
Wire brake			Yes	Yes
Shaft bearing			Yes	Yes
Telescopic handle				Yes
Mobile casters				Yes
40*33cm network model is suitable for most 300 network cable, monitoring cable, network power 4*2/B*2 hybrid line, 500-1500 optical fiber				
45 x 40 is suitable for 2000 optical fibers and 1500-3000 m optical fibers with a diameter of 45 and a width of 40 or less				



Handheld Rangefinder



7

Instrumentation

Wireless high voltage phase detector

The wireless high voltage phase detector is applied to the phase check and phase sequence check of power line and substation, with nuclear phase , phase sequence measurement , detector and other functions with strong anti-interference , in line with EMC standards , to adapt to a variety of electromagnetic filed interference occasions .

Technical characteristics

- 1.Screen display : wireless high voltage phase detector , different phase , in phase , frequency,X,Y.
- 2.Power : the host uses rechargeable power supply , and X and Y collectors have five AG13 batteries.
- 3.Auto OFF : the host machine shuts down automatically about 8min after startup.
- 4.When contacting the measured electric field , the instrument will automatically alarm.



High voltage alarm

Non-contact induction technology, accurate alarm, accurate alarm ,power saving and durable ,standby time up to 12 hours.

When the operator wears the alarm , when it is close to the high-voltage charged body at a certain distance , the alarm will send out sound and light alarm according to the safety distance corresponding to the voltage level to remind the electrical staff to pay attention to safety and avoid high-voltage electric shock accident .



Weight	35kg
Inspection way	Contactless
Alarm rang	1-110kv
Operating frequency	50Hz/60Hz
Range error	±10cm
Alarm type	Indicator light; Indicator 8000XL LED light visible under visible light
	Buzzer : 60db (60cm apart)
IP rate	IP54
Insulation test	AC3700V/rms

Voltage classes	Safety distance	Alarm distance
1KV	\	0.1m
6.6KV	\	0.7m
10KV	0.7m	1.0m
35KV	1.0m	1.6m
66KV	1.5m	2.2m
110KV	1.5m	2.5m
220KV	3m	3.5m

Gas Monitor

Detection gas type	Combustible,oxygen,other gas types can be configured as required
Charging time	6-8hours
Usage time	>8hours
Working environment	Temperature -20°C; humidity < 95%RH no condensation
Response time	T < 30s
Product size	130*65*45
Product weight	Around 0.5KG



Zero detector

Model	RZHHCLY01
Voltage classes	10-500KV
Material	Fiberglass
Color	Orange
Applicable scene	Electric power ,petroleum ,coal,chemical industry ,etc
Specifications	10KV , 66KV , 110KV , 220KV , 330KV , 500KV



Resistance tester

It is mainly used to automatic resistance of a large number of portable short-circuit grounding lines and personal protection grounding line in operation units according to the requirements of the new safety regulations,automatically judge whether it ' s qualified.

Scientific evaluation of the wire section , material , joint crimping , broken core and other comprehensive quality ,to the acceptance of the new grounding line , has been used in the grounding line availability of scientific evaluation .

- Test current: 10A ,20A ,30A
- Test range: 0-199.99mΩ
- Accuracy: 0.5
- Ground cable test terminal : 2-5 terminals
- Power : 220 ± 10% 50 ± 5Hz



Sulfur hexafluoride gas detector

The gas detector is a toxic gas monitor with modular design,intelligent sensor detection technology,integral flame-proof(D) structure and fixed installation .The standard configuration is LCD with dot matrix LCD display , 3-wire system 4-20mA analog and RS485 digital signal output ,optional configuration for programmable switching output module ,according to user requirements to provide customized products , but also support output signal fine-tuning and other functions , convenient system networking and maintenance.

It is widely used in oil extraction , smelting ,chemical industry , municipal administration ,sewage treatment , electricity , gas , mining , tunnel construction ,fire fighting , storage , paper making , pharmaceutical ,brewing and other toxic and harmful gas concentration places .



8

Hardware Fitting



H-type Wire Clamp

Jumper line, branch line, lead line, household line, incoming line and other wires of overhead high voltage and low voltage power line tower are crimped and connected. H type crimping clamp is made of pure aluminum, the hook is filled with oxygen protective oil, suitable for aluminum wire to aluminum wire, aluminum wire to copper wire crimping connection, with integrated forming and fully wrapped wire, excellent conductivity, uniform current distribution, low temperature rise, energy saving and other characteristics.

Specification				Pressure welding			Silicone rubber insulation cover model
A hook		B hook		Mould	times	Length (mm±1)	
OD (mm)	CSA (mm ²)	OD (mm)	CSA (mm ²)				
4.8-8.2	16-35	4.8-8.2	16-35	0-0	2	44	LHZ-1
8.3-14.0	50-95	4.8-9.6	16-50	1-2	3	63	LHZ-2
10.0-14.0	50-95	10.0-14.0	50-95	1-2	3	63	LHZ-2
13.0-22.4	95-240	4.8-11.4	16-70	3-5	3	63	LHZ-2
13.0-22.4	95-240	11.6-16.0	70-150	3-5	3	63	LHZ-2
16.2-22.4	150-240	16.2-22.4	150-240	3-5	4	114	LHZ-3





GA-108 Hedgehog Clamp

It is suitable for continuous connection of aluminum core cable, insulated single core aluminum conductor and naked stranded aluminum core cable, and is mainly used for non-bearing connection and branching of wires in overhead power lines.

J-type Wire Clamp

J type wire clamp is suitable for non-bearing connection and branch of wire in overhead electric line, which can be used together with insulation cover to protect insulation.



Weima Wire Clip

Self-locking wedge-shaped parallel groove clamp is also known as Weima wire clip.

Self-locking wedge-shaped parallel groove clamp is composed of e-type components and wedges made of high-strength aluminum alloy material with good conductivity. It is widely used in the connection between aluminum stranded wire and steel core aluminum stranded wire, aluminum stranded wire and copper stranded wire, insulated wire and non-seriously polluted copper stranded wire.

C-type Wire Clamp

Product Features

1, the product design adopts scientific articulated and fixed components, greatly strengthened the function of the overall unified uniform stress, fixed components solves the other C clamp in the screw nut to the left and right sides two sliding and need correction shortcoming for many times, and the fixed element perfect combination with mother block also greatly reduce labor intensity, and greatly improve the working efficiency; Force and pressure in different directions, installation greatly reduce the impact of human factors, but also make the appearance become round and more beautiful.

Reinforced C type clamp excellent material and scientific and reasonable structure, so that in the process of use, with the external environment and load condition change, and the clamp on the wire contact pressure change is very small, so that the connection to meet the best requirements.

The use of special silicon magnesium alloy has the flexibility, can long to keep constant contact stress between wires and wire clip, and a constant and large enough contact pressure and the contact area can long to keep very low contact resistance, flow ability is strong, the conductor to form stable pressure load, and coated with corrosion resistance, oxidation resistance, hydrophobic compound conductive properties of strong electricity. Can make different material wire contact good, such as: aluminum - aluminum, copper - copper connection, copper - aluminum transition. (Conductive paste volatilization period of 15 years), so that the circuit contact performance is good and reduce loss.

Screw fastening, the bolt is imported stainless steel, strong anticorrosion ability; quick and easy installation, universal wrench will do; the price is also economic and reasonable, relatively high cost performance.

with stable and good contact performance, maintenance-free, reduce maintenance costs, enhance reliability, in the installation and disassembly of wire completely no damage; It can be reused for many times and has the same life as wire.

Application

1. Applicable voltage class : 300/500V , 600/1000V , 8.7/15KV , 26/35KV ;
2. Applicable cable category:

- (1)Copper stranded wire - copper stranded wire, copper stranded wire - aluminum stranded wire, aluminum stranded wire - aluminum stranded wire;
- (2)Copper stranded wire - steel cored aluminum stranded wire, steel cored aluminum stranded wire - steel cored aluminum stranded wire, aluminum stranded wire - steel cored aluminum stranded wire
- (3) Overhead insulated wire - overhead insulated wire, overhead insulated wire - steel core aluminum stranded wire.

Application Area

- (1) Main branch lines of power grid for transmission and distribution (connection of LGJ, LJ, JKLYJ and TJ);
- (2) Ground lead
- (3) Transformer lead down (T connection, large and small jumper), transformer outlet
- (4)Urban network 300/500V main lines: single plastic double plastic copper stranded, aluminum stranded.



AMPACT

JXL/JXD wedge-shaped parallel groove clamp is also known as AMPACT .

JXL/JXD wedge-shaped parallel groove clamp is suitable for non-bearing or branch connection of insulated aluminum stranded wire, aluminum stranded wire, copper stranded wire or steel cored aluminum stranded wire in overhead distribution line. Insulation cover and wire clamp are used together to play the role of insulation protection. The wire clamp is composed of a wedge shell and wedge block. The wire clamp and wire should be installed with special installation tools (ejection gun or manual hydraulic clamp).



Type C Temperature Measuring Line Clip

The Wire clamp shell is made of special aluminum alloy, wire clamp and wire contact area is large. Ultra-high temperature warning is convenient for observation and sensitive and obvious. The component has the function of preventing falling off, which is easy to use by the staff at high altitude. Widely used in household appliances, electrical enterprises, mechanical equipment, shipyard and so on.



JGH Bolt Type Torque Terminals



Torque Transformer Wire Clip

Suitable for capacity of 30-400kVA transformer wiring connection of various specifications.



Full Tension Automatic Quick Connector

It is suitable for maintenance and repair of power-off lines and new lines. High tensile endurance to avoid the phenomenon of wire falling off and breaking. Widely used in home appliances, electrical industry, mechanical equipment, shipyards, etc.

