

EZ Hauler 55M LP X

EZ Hauler 55M LP X Mini Derrick



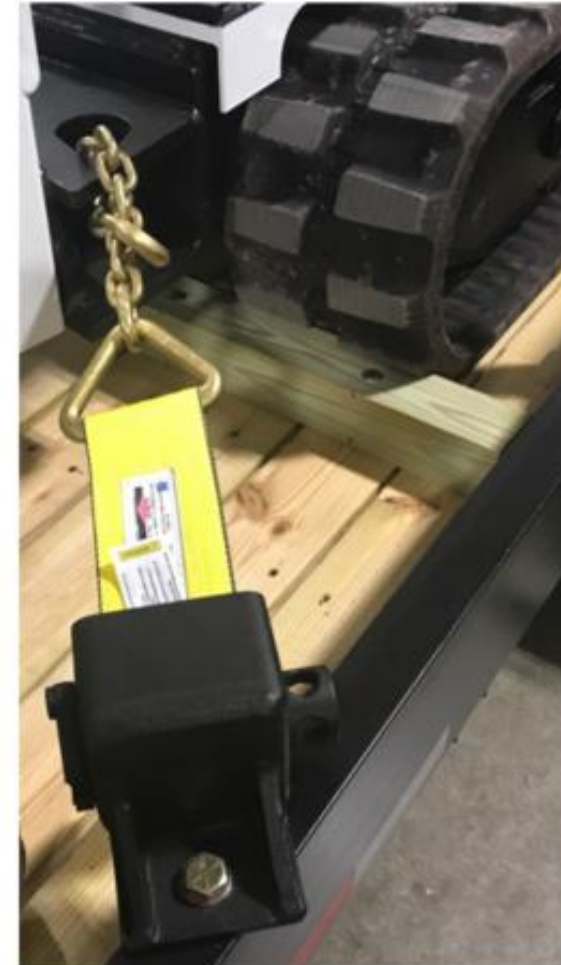
Product Overview

EZ Hauler 55M LP

- **Continuous rotation, HOP, wireless remote and 2-speed drive** is standard.
- **Track interlock** and **outrigger interlock** is Standard
- **EZ Hauler** has ability to **retract tracks** without lifting unit off the ground
- Wireless Remote Controller has spare battery on the Unit, the **Can Cable** can reprogram all controllers
- **Transformer Bed** is **built** into frame of unit
- Free comprehensive operator **Training Program**
- Fully **ANSI Compliant: A.10.31 2006**
- **Tier IV engine.**
 - Over **50** hours of operation on a full tank of fuel.

17,500 GVWR Trailer

- Mounting spots for all Options
- Tool box and spare tire standard



Front Telescopic Outriggers

- Radial outriggers front and rear. Does not require any manual pinning before deployment. Fully hydraulically controlled.
- Front outriggers are Telescopic to store under boom.



Operating Slope

- Operates/travels on slopes up to 25° up/down hills.
- Operates/travels on a 20° side hill slope with the tracks extended.
 - Operates/travels on a 5° side hill slope with the tracks retracted.



The EZ Hauler Xtreme with patent pending track extension system. This new track extension system allows the unit to retract to 35.5" and extend to an amazing 56". The new Xtreme EZ Hauler track system allows for unmatched stability when travelling on uneven terrain with your EZ Hauler, while still maintaining the ability to fit through a standard gate opening.

35.5"



56"



Pole Transportation

- Poles can be carried to the jobsite on either side of the machine by the outriggers. No need to set the machine up in order to load the pole in a pole rack.



Pole Claws

- Pole claws Open/Close and **tilt hydraulically**.
 - Standard feature



Bucket Stow

- The bucket can be used on both sides of the Unit
 - The bucket can be stored on the side opposite of the auger, it can be locked (stored) in a position parallel to the boom that allows the unit to dig a hole and travel with the bucket attached to the boom.



Material Handling Jib

- Jib is lightweight and can be easily installed by one person. Each piece weighs 20 lbs.
- The winch tip jib stays stowed on the boom tip
- Pad mount transformer platform is a part of the chassis/frame. No need for a pin on accessory attachment in order to gain room to carry a transformer to the job site.



Low Profile

- Overall travel height is **6' 9"**.
 - Lower travel height means lower center of gravity which decreases the chance the unit will tip over in rough terrain conditions.



Fully Proportional Valving

- All Hydraulics offer fully manual operational backup with remote functions



Load Monitoring System

- Load Monitoring Screen
 - This screen acts as both a travel angle indicator and a boom load monitoring screen.
 - Can view operators manual and **track load history**



Spare Remote Battery on the Unit

- Spare battery for the remote control is charged and stored on the machine. No need to charge the batteries in the warehouse or a 12V outlet on the tow vehicle.
- 2nd Hydraulic reel/line is stowed within the chassis, no need to handle it as an accessory and pin it on to the machine.



CAN System

Units use CAN technology for engine and option controls.

Remotes are easily programmed and adjusted with this technology.



QR Code

- QR Code so that your people have EZ Hauler info at their finger tips.



S.D.P.
MANUFACTURING, INC.

Scan this QR code for:

- Maintenance Information
 - Recall Notices
 - Reference Manuals
 - Startup Information



EZ Hauler in Action

